

**E
V
O
L
U
T
I
O
N**

Hancock
Plywood



maxform

Maximum Performance Formply

F17

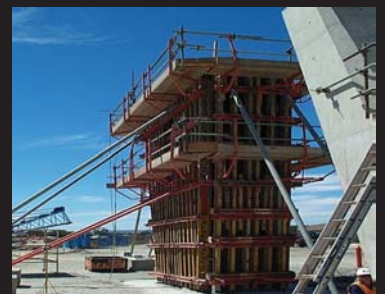
No Oil

More Pours

Superior Finishes

Lowest Cost per Pour

Greater Impact Resistance



EVOLUTION maxform

HIGH PERFORMANCE FORMPLY

Manufactured from the perfect blend of naturally grown and ecologically sustainable softwoods combined with the latest in overlay technology, "Maxform" redefines formwork by creating a hybrid formwork panel that maintains light weight characteristics, superior impact resistance* and the high quality finish associated with Hoop pine.



*Based on NEMA "Falling Ball Impact Testing"

OFF FORM Finish

Class #3

EVOLUTION Maxform achieves a CLASS #3 form finish in accordance with AS 3610-1995. Good visual quality for MOST visual applications.

Class #2

EVOLUTION Maxform can be used in accordance with AS 3610 to achieve a class #2 off-form finish on the first four pours per side. Particular attention is drawn to the requirements within AS 3610 for test panels, together with the necessary requirements listed below:

- Use of suitable release agents applied in accordance with manufacturers recommendations.
- Expansion joints of 2mm used with joint sealer or edge and surface tapes.
- Suitable fixing to maintain step tolerance required of class #2 finish.
- No mechanical damage to overlay or edge sealing

Applications

Thicker PSF provides superior finishes and allows for more pours. The overall panel also has greater impact resistance. Regarded by the market as a higher quality and more dependable panel.

An Ideal formwork panel suitable for multiple reuse is desired:

- All industrial & commercial applications
- Minor or major projects

TECHNICAL SPECIFICATIONS

Overlay: Phenolic Surface Film (PSF) 212/414

Stress Grade: F17 / F22 / F27

Glue Bond: "A" type marine

Standard: AS/NZS 2269 Structural Plywood

Face Veneer: Hoop pine (Softwood)

Edge Sealant: Water repellent

Edge Colour: BLACK

Class Form Finish: (see above)

Superior Construction

- PFS - High Density Phenolic Surface Film.
3 times thicker than standard 60/150 PSF
- Select aged **SOFTWOOD** outer veneers.
- Greater impact resistance
50% better than standard Formwood*
- Quality assured "A" bond Marine glue bonds.

Phenolic Film Advantages

- **Flexibility** - Same film is suitable for a variety of uses such as concrete shuttering, truck floors, containers, shelves, storage racks and bins.
- **Durability** - High scuff and abrasion resistance of PSF means that panels last longer in all applications.
- **Chemically Resistant** - Withstands continuous contact with dilute acids, alkaline, organic chemicals and many neutral and acidic salts which increases panel reuses in concrete shuttering.
- **Exterior Use** - PSF panel resists severe weather exposure without finishing.
- **Visual Appearance** - Helps mask substrate irregularities and gives a solid uniform finish.
- **Machinability** - Machines well during sawing, routing and drilling. Minimises veneer tearing and chip out.

Quality Assured

Boral Hancock Maxform is manufactured in accordance with the independent quality control program audited by the Plywood Association of Australia who have international accreditation for such service.



Sheet Dimensions

EVOLUTION Maxform is available in the following industry standard sizes:

- Width: 1200
- Length: 2400 / 1800
- Thickness: 17mm (other sizes on application)

Hancock
Plywood



ALLEN TAYLOR & COMPANY LTD.
ABN 39 000 003 056

Lamington Parade
North Ipswich, Queensland, 4305

Telephone 07 3432 6598
Sales Facsimile 07 3281 3995
Email sales.hancock@boral.com.au
Visit www.boral.com.au

PROUDLY DISTRIBUTED BY

Boral Hancock Plywood retains the right to change specifications without notice in accordance with its policy of continued product development. Every care has been taken in preparing the information contained within this publication, however, the company cannot accept responsibility for any inaccuracies that may have arisen, and cannot accept liability for loss or damage either direct or consequential arising out of or in relation to use or application of the said information. Certain species are supplied on the basis of availability.