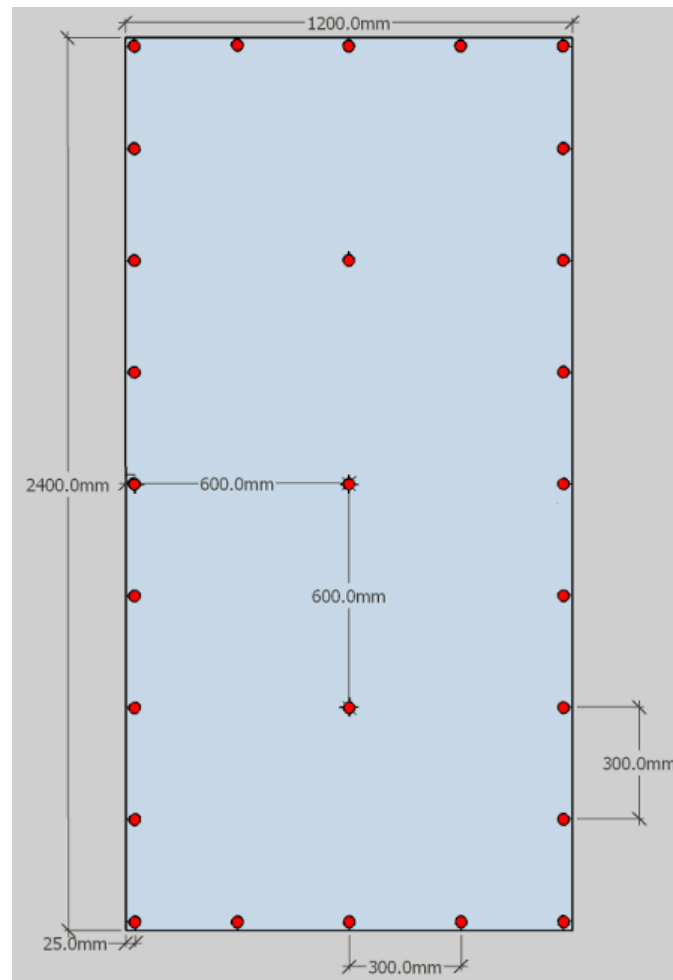


Ariaply 2400x1200x12.5mm FIXING Set-Out

Pre Installation Care

1. Check to see if material has arrived in satisfactory condition.
2. Keep flat on 4 bearers.
3. Keep in dry environment.
4. Two people to lift panel off pack. Do not drag panel off the pack.
5. Pre drill hole and countersink.
6. Completely seal hole with ariaply sealer.
7. Fix screw.



After Installation Care

1. If need to clean, use cold or warm water only with a very mild detergent.
2. Wipe dry with clean cotton cloth.

DO NOT use high pressure water

DO NOT flood the product with water (e.g. directly spraying water from a hose)