



Contents

Knowing your timber	3
Interior Clears	4
How to complete an Interior Clears Project	5
Interior Timber Preparation and Maintenance	6
Flooring Products	7
How to complete a Flooring Project	8-9
Interior Stains	10
How to complete an Interior Stain Project	11
Interior Stains colour range	12-13
Cabot's Product Guide	14-15
Cabot's Project Guide	16

About Cabot's

Cabot's Timber Finishes are the leading woodcare products in Australia. Since 1877 Samuel Cabot has manufactured a range of superior timber finishes. Cabot's timber finishes are made in Australia with pride and offer a comprehensive range of stains, varnishes, clear finishes, oil, paints and polishes for the preservation and beautification of timber around your home. Cabot's will help you to achieve a premium finish from an easy to choose range of products and provide you with step by step information on how to do the job properly.

For more information call our customer service team on 1800 011 006 or visit www.cabots.com.au

Knowing your timber

Before you begin to coat your timber, it is important to know exactly what it is. Taking this into consideration will help enhance your overall result.

TIMBER TYPE	DESCRIPTION	COMMON USES
OREGON	Oregon is an imported hard plantation timber that is easy to work with. It has a high resin content that can work its way out and crystallise on the surface of the timber. To remove, leave to dry then scrape off crystals before coating	Pergolas and structural framing
CYPRESS*	Cypress is an Australian hard, knotty and fairly strong timber with a fine texture. It can be worked to a very high polish and takes most finishes well after de-oiling	Flooring, panelling, decking, fences and structural timber
RADIATA PINE	Radiata pine is a commonly available, easy to work Australian softwood plantation timber. It is ideal for staining	Interior furniture, wall or ceiling lining boards, plywood, particleboard and general construction
JARRAH	Jarrah is heavy and tough with a slight, pleasant odour. Jarrah can be highly polished and accepts most finishes well	Flooring, panelling, joinery, interior and exterior furniture and decking.
WESTERN RED CEDAR	Western red cedar is a pale to dark brown North American wood that is easy to work with. It is an extremely durable though very soft timber	Weatherboards, fascias, windows, doors and garden furniture
TEAK	Teak ranges in colour from golden to dark brown. It is rich in oils that help impart moderate durability and its characteristic waxy feel	Interior and outdoor furniture
MERBAU (KWILA)*	Merbau is an extremely durable hardwood and is most commonly used for timber decking. A rich-brown timber, it is resistant to termites and decay, but is susceptible to tannin bleed, which appears as a red-brown colour as water runs off the timber. It may require repeat applications of Cabot's Deck Clean for exterior applications only	Decking, fences, flooring, outdoor furniture and panelling
BRUSH BOX*	Brush box is a hard, dense, light-brown timber commonly used in New South Wales and Queensland for interior flooring. It is resistant to wear however natural 'waxiness' can cause some adhesion problems with some strong solvent floor finishes, but otherwise it is a good timber for staining and coating	Flooring, interior furniture, cladding and fences
VICTORIAN ASH (TASMANIAN OAK)	Victorian ash is a hard timber that has a uniform light beige to light pink colour and readily accepts stains and coatings	Flooring, kitchen cupboards, wall panelling and some interior furniture
SPOTTED GUM*	Spotted gum is a very dense, oily Australian hardwood. Note: Spotted gum is often presented in timber sold as 'mixed hardwood'	Flooring, cladding, decking, fencing, landscaping, retaining walls and structural timber

*These woods are naturally oily and have a high tannin content.

Furniture and Trim Products

Interior clears – doors, windows, trim and furniture

Finish: natural/transparent.

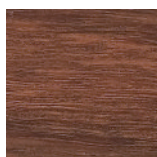
Cabot's Cabothane Clear Water Based



Product description:	Cabot's Cabothane Clear Water Based is a clear polyurethane for doors, windows, trim and furniture. It is a highly durable, hard wearing and fast drying varnish	
Features:	<ul style="list-style-type: none"> • No sanding required* • High durability • Fast recoat - 2 hours 	<ul style="list-style-type: none"> • UV resistant • Low odour & non yellowing
Sheen levels available:	Matt, Satin or Gloss	
Coverage:	Up to 16m ² per litre	
Apply with:	Brush or spray gun	
Number of coats:	3 coats	
Recoat:	2 hours	
Clean up:	Water	
Use on:	All interior timber excluding flooring	



*No sanding required – refer to back of product for detailed instructions.



Gloss on Jarrah

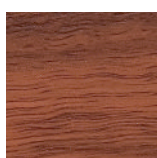


Satin on Radiata Pine

Cabot's Cabothane Clear Oil Based



Product description:	Cabot's Cabothane Clear Oil Based is a clear polyurethane for doors, windows, trim and furniture. It is a highly durable, hard wearing varnish	
Features:	<ul style="list-style-type: none"> • High Durability • Resists stains & scratches • Enhances timber grain 	<ul style="list-style-type: none"> • Reduced odour & 6 hour recoat • UV Resistant
Sheen levels available:	Matt, Satin or Gloss	
Coverage:	Up to 16m ² per litre	
Apply with:	Brush or spray gun	
Number of coats:	3 coats	
Recoat:	6 hours	
Clean up:	Mineral Turpentine	
Use on:	All interior timber excluding flooring	



Gloss on Jarrah



Satin on Radiata Pine

Cabot's Benchtop Clear



Product description:	Cabot's Benchtop Clear Water Based is a highly durable, heat* and stain resistant, fast drying varnish that is safe for use on living and kitchen timber bench tops when the surface is fully cured.	
Features:	<ul style="list-style-type: none"> • Heat resistant* • High durability • Fast recoat - 2 hours 	<ul style="list-style-type: none"> • Stain resistant • Low odour & non yellowing
Sheen levels available:	Satin or Gloss	
Coverage:	Up to 16m ² per litre	
Apply with:	Brush	
Number of coats:	3 coats	
Recoat:	2 hours	
Clean up:	Water	
Use on:	Timber/bamboo kitchen bench tops, tables and coffee tables	

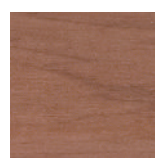


*Heat resistant – refer to back of product for detailed instructions.

Cabot's Danish Oil



Product description:	Cabot's Danish Oil is a penetrating oil for all interior furniture, doors, windows and trim. It penetrates to provide a protective natural matt finish	
Features:	<ul style="list-style-type: none"> • Nourishes & protects • Abrasion resistant 	<ul style="list-style-type: none"> • Enhances natural grain • Easy to apply
Coverage:	Up to 10m ² per litre	
Apply with:	Brush, roller or rag	
Number of coats:	2 coats	
Recoat:	8 hours	
Clean up:	Mineral Turpentine	
Use on:	All interior timber excluding flooring	



Danish Oil on Cedar

How to complete an Interior Clears Project

How to apply Cabothane Clear Water Based



For bare interior timber:

Sand the surface smooth using 180-240 grit sandpaper.

For previously coated interior timber:

1. Thoroughly clean the surface with Cabot's Floor Clean and allow to dry.
2. Apply one coat of Cabothane Clear Water Based to a small test area.
3. Allow test area to dry for 2 hours, press sticky tape firmly to the surface and pull off quickly. If any coating comes off, the surface must be sanded.



1. Stir can thoroughly with a broad flat paddle.
2. Apply with a good quality brush or spray gun.
3. Allow to dry for a minimum of 2 hours.
4. Apply 2nd and 3rd coats as above.

Note: For staining interior timber refer to Cabot's Stain & Varnish Water Based or Cabot's Interior Stain Water Based.

How to apply Cabothane Clear Oil Based



For bare interior timber:

Sand the surface smooth using 180-240 grit sandpaper.

For previously coated interior timber:

Thoroughly clean the surface with Cabot's Floor Clean and allow to dry. Sand with 180 – 240 grit sandpaper.



1. Stir can thoroughly with a broad flat paddle.
2. Apply with a good quality brush or spray gun.
3. Allow to dry for a minimum of 6 hours.
4. Apply 2nd and 3rd coats as above.

Note: For staining interior timber refer to Cabot's Stain & Varnish Oil Based or Cabot's Interior Stain Oil Based.

Interior Timber Preparation and Maintenance

Timber Floor Cleaning

Cabot's Floor Clean



Product description:	Cabot's Floor Clean is an all purpose interior timber cleaner that is fast acting on grease and grime
Features:	<ul style="list-style-type: none"> • Everyday cleaning solution • Easy to use • Prepares timber for recoat • Pleasant citrus fragrance
Coverage:	Up to 60m ² per litre
Apply with:	Floor mop
Clean up:	Water
Use on:	All timber finishes, tiles and painted walls

What is Floor Clean

An everyday timber floor cleaning solution.

When to use Floor Clean

1. For everyday timber floor cleaning.
2. For cleaning interior timber prior to recoat.

Timber Floor Maintenance

Cabot's Floor Polish



Product description:	Cabot's Floor Polish is a maintenance solution for rejuvenating timber floors. It prolongs the life of timber floor coatings
Features:	<ul style="list-style-type: none"> • Rejuvenates and protects • Easy to apply • Adds shine • Fast drying - 1 hour
Coverage:	Up to 60m ² per litre
Apply with:	Floor mop
Number of coats:	1 coat
Dry time:	1 hour
Clean up:	Water
Use on:	Previously coated timber, parquetry or cork floors

What is Floor Polish

A sacrificial layer that resists knocks and scratches, protecting the timber floor coating below.

When to use Floor Polish

Periodically when the appearance of the timber floor coating needs rejuvenating (eg. every 6 months), this will prolong the life of your timber floor coating.

Interior Timber Preparation

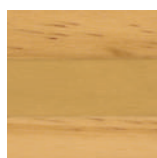
Cabot's Wood Tone Putty



Product description:	Cabot's Wood Tone Putty is an interior putty for use on all interior timber. It fills holes, cracks and blemishes without shrinking
Features:	<ul style="list-style-type: none"> • Easy to use • Grain & hole filler • Fast drying
Apply with:	Putty knife
Clean up:	Water
Use on:	All interior timber



Natural



Pine



Cedartone



Meranti



Jarrah



Walnut

Cabot's Touch Up Pens



Product description:	Cabot's Touch Up Pens provides the perfect solution to quickly and easily disguise chips and scratches on all interior timber around your home. Available in 5 colours and a Satin & Gloss clear pen.
Features:	<ul style="list-style-type: none"> • Maintain the look and finish without the mess • Designed to closely resemble actual timber • Great for small hobby and woodcraft projects • Easy to use
Clean up:	Mineral Turpentine
Use on:	All interior timber

Flooring Products

Flooring Clears

Finish: natural/transparent.

Cabot's CFP Floor Water Based

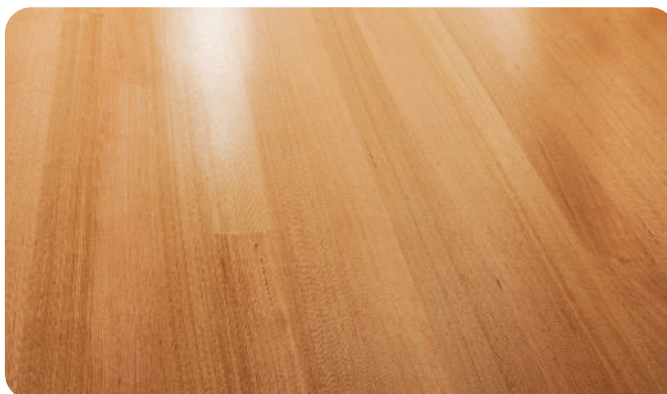


Product description:	Cabot's CFP Floor Water Based is a clear flooring polyurethane for all interior timber parquetry and cork flooring. It is a highly durable, hard wearing and fast drying finish	
Features:	<ul style="list-style-type: none"> • No sanding required* • High durability • Resists stains and scratches 	<ul style="list-style-type: none"> • Fast recoat - 3 hours • Low odour & non yellowing
Sheen levels available:	Matt, Satin or Gloss	
Coverage:	Up to 16m ² per litre	
Apply with:	Brush, 6-10mm nap roller or pad applicator	
Number of coats:	2-3 coats	
Recoat:	3 hours	
Clean up:	Water	
Use on:	Timber, parquetry, cork, MDF flooring and timber floating floors	



No sanding required

- No sanding is required for pre-coated timber floors.
- Saves preparation time, cost of sanding and mess.
- See next page for 'How to' instructions.



*No sanding required – refer to back of product for detailed instructions.



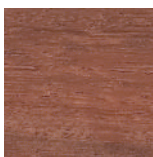
Gloss on Victorian Ash



Satin on Brush Box



Gloss on Pine



Gloss on Jarrah

Cabot's CFP Floor Oil Based



Product description:	Cabot's CFP Floor Oil Based is a clear flooring polyurethane for all timber, parquetry and cork flooring. It is highly durable and has a hard wearing finish	
Features:	<ul style="list-style-type: none"> • High durability • Resists stains & scratches 	<ul style="list-style-type: none"> • Enhances timber grain • Oil enriched
Sheen levels available:	Satin or Gloss	
Coverage:	Up to 16m ² per litre	
Apply with:	Brush, 6-10mm nap roller or pad applicator	
Number of coats:	2-3 coats	
Recoat:	12 hours	
Clean up:	Mineral Turpentine	
Use on:	Solid timber, parquetry, cork & MDF interior flooring	



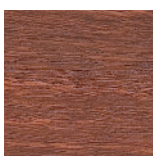
Gloss on Victorian Ash



Satin on Brush Box



Gloss on Pine



Gloss on Jarrah

Cabot's CFP Hardner



Product description:	Cabot's CFP Hardener is an additive for Cabot's CFP Floor Oil Based. It speeds the hardening process and wear resistance
Mix ratio:	250ml of CFP Hardener to every 4L of CFP Floor Oil Based

How to complete a Flooring Project

How to recoat your floors with Cabot's CFP Floor Water Based No sanding required



Step 1



Step 2



Step 3

Cleaning and preparing your timber floor

Bare timber floors or floors with highly visible scratches and imperfections must be sanded smooth using 180-240 grit sandpaper.

- Remove any polish with a suitable floor polish remover. Fill any holes or cracks with Cabot's Wood Tone Putty after applying the first coat of Cabot's CFP Floor Water Based for accurate colour matching.
- Thoroughly clean the surface with Cabot's Floor Clean: mix 2 capfuls of Floor Clean into 4 litres of water.
- Allow to dry.
- For stubborn marks, such as black heel marks caused by shoes: use Cabot's Floor Clean neat with a rag.

Test for adhesion

- Apply one coat of CFP Floor Water Based to a small test area.
- Allow to dry for 3 hours.
- Press sticky tape firmly to the surface and pull off quickly.
- If no coating comes off, proceed to step 3. If some coating is removed, sand back further to a sound surface.

Apply CFP Floor Water Based

- Stir can thoroughly with a broad flat paddle.
- Cut in around the edges of the floor, one section at a time with a good quality synthetic brush.
- Apply along the length of 3-4 boards with a pad applicator or 6-10mm nap roller, keeping a wet edge.
- Allow to dry for 3 hours.
- Apply 2nd coat as above.

Note – to stain a floor

- Previously coated floors must be sanded first.
- Apply chosen colour of Cabot's Stain & Varnish Water Based as the first coat with a 6-10mm nap roller.
- Top coat with Cabot's CFP Floor Water Based as above.



Flooring Products

How to recoat your floors with Cabot's CFP Floor Oil Based



Step 1



Step 2



Step 3

Cleaning and preparing your timber floor

- Remove any polish with a suitable floor polish remover or stripper.
- Remove any stains, dirt, wax, grease or oils with mineral turpentine.
- Fill any holes or cracks with Cabot's Wood Tone Putty after applying the first coat of Cabot's CFP Floor Oil Based for accurate colour matching.
- Clean previously coated timber with Cabot's Floor Clean.

Sand your floor

- Sand with 180-240 grit sandpaper and remove all traces of sanding dust.

Apply CFP Floor Oil Based

- Stir can thoroughly with a broad flat paddle.
- Cut in around the edges of the floor, one section at a time with a good quality synthetic brush.
- Apply along the length of 3-4 boards with a pad applicator or 6-10mm nap roller, keeping a wet edge.
- Allow to dry for 12 hours.
- Sand with 240 grit paper, remove all traces of sanding dust.
- Apply 2nd/3rd coats as above.

Note – to stain a floor

- Previously coated floors must be sanded first.
- Apply chosen colour of Cabot's Stain & Varnish Oil Based as the first coat with a 6-10mm nap roller.
- Top coat with Cabot's CFP Floor Oil Based as above.



Interior Stains

Stain & Varnishes

Cabot's Stain & Varnish Water Based



Product description:	Cabot's Stain & Varnish Water Based is a combined stain and varnish for all interior timber. It is easy to use and has a durable finish that protects the natural timber grain	
Features:	<ul style="list-style-type: none"> • Resists stains & scratches • Enhances timber grain 	<ul style="list-style-type: none"> • Fast recoat - 2 hours • Low odour • No top coat required
Sheen levels available:	Satin or Gloss	
Coverage:	Up to 16m ² per litre	
Apply with:	Brush or roller	
Number of coats:	3 coats	
Recoat:	2 hours	
Top coat required:	No top coat required	
Clean up:	Water	
Use on:	All interior timber	

Cabot's Stain & Varnish Oil Based



Product description:	Cabot's Stain & Varnish Oil Based is a combined stain and varnish for all interior timber. It provides colour and shine without hiding the grain	
Features:	<ul style="list-style-type: none"> • Resists stains & scratches • Enhances timber grain 	<ul style="list-style-type: none"> • Oil enriched • No top coat required
Sheen levels available:	Satin or Gloss	
Coverage:	Up to 16m ² per litre	
Apply with:	Brush or roller	
Number of coats:	3 coats	
Recoat:	8 hours	
Top coat required:	No top coat required	
Clean up:	Mineral Turpentine	
Use on:	All interior timber	

Interior Stains

Cabot's Interior Stain Water Based



Product description:	Cabot's Interior Stain Water Based is a penetrating stain for interior doors, windows, trim and furniture. It is easy to use and transforms the colour of interior timber	
Features:	<ul style="list-style-type: none"> • Enhances timber grain • Easy to apply • Fast recoat - 2 hours 	<ul style="list-style-type: none"> • Low odour • Clear top coat required
Coverage:	Up to 12m ² per litre	
Apply with:	Brush, roller or rag	
Recoat:	2 hours before applying a top coat	
Top coat required:	Yes - use Cabot's Cabothane Clear Water Based as a top coat	
Clean up:	Water	
Use on:	Interior timber doors, windows, trim and furniture	

Cabot's Interior Stain Oil Based



Product description:	Cabot's Interior Stain Oil Based is a penetrating stain for interior doors, windows, trim and furniture. It rejuvenates and transforms interior timber	
Features:	<ul style="list-style-type: none"> • Enhances timber grain • Easy to apply 	<ul style="list-style-type: none"> • Oil enriched • Clear top coat required
Coverage:	Up to 12m ² per litre	
Apply with:	Brush, roller or rag	
Recoat:	8 hours before applying a top coat	
Top coat required:	Yes - use Cabot's Cabothane Clear Oil Based as a top coat	
Clean up:	Mineral Turpentine	
Use on:	Interior timber doors, windows, trim and furniture	

How to Complete an Interior Stain Project

How to apply Cabot's Stain & Varnish



Step 1

Surface preparation

For bare and previously coated interior timber:

Sand the surface smooth using 180-240 grit sandpaper.



Step 2

Apply the coating

1. Stir can thoroughly with a broad flat paddle.
2. Apply Stain & Varnish with a good quality brush or roller.
3. Allow to dry and lightly sand between coats.
4. Apply 2nd and 3rd coats as above.



How to apply Cabot's Interior Stain



Step 1

Surface preparation

For bare interior timber:

Sand the surface smooth using 180-240 grit sandpaper.

For previously coated interior timber:

Completely remove the previous coating using a paint stripper or by sanding.



Step 2

Apply the coating

1. Stir can thoroughly with a broad flat paddle.
2. Apply Interior Stain with a good quality brush, roller or rag.
3. Allow to dry.
4. Apply Cabot's Cabothane Clear as a top coat.



Stains



Clear Top Coats

Cabot's Interior Colour Range

Colours available in:

- Interior Stain (Oil and Water Based)
- Stain & Varnish (Oil and Water Based)



Liming White T



Cashew T



Hickory T



Marita Grey T



Burnt Gum T



Indian Tea T



Coal T



Black T



Coco Black T



Chuey Red T



Kangaroo Paw T



Banksia T



Barryard Red T



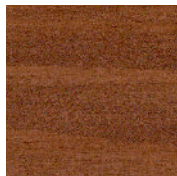
Australian Jarrah T



Autumn Leaf T



Jarrah ●



Cedar ●



Deep Mahogany T

Looking for a favourite Cabot's Interior colour used in the past, speak to your retailer.

● – Pre-packaged colours

T – Tinted from Tint Base

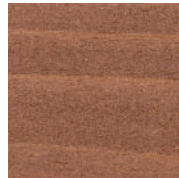
*All colours are available in both Oil and Water Based Interior Stain and Oil and Water Based Stain & Varnish.

*All colours shown are Cabot's Stain & Varnish Water Based Satin on Pine.

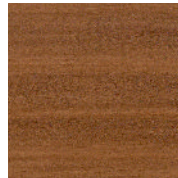
Note: colours may vary depending on timber type



Sassafras T



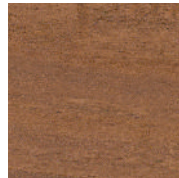
Crabwood T



Suburbia T



Gibson T



Manuka T



Brazilian Roast T



Walnut ●



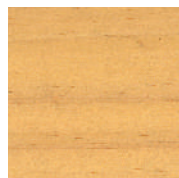
Acorn T



Dark Chocolate T



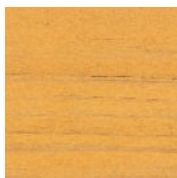
Honey T



Boxwood T



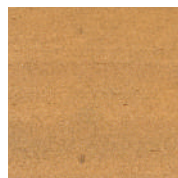
Vladic Pine T



Lemon T



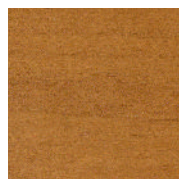
Myrtle T



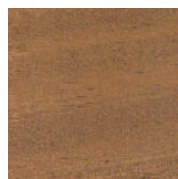
Yellow Ash T



Golden Elm T



Maple ●



Sutherland Teak T

PRODUCT TYPE	PRODUCT	DESCRIPTION	WHERE TO USE
FLOORING	 CFP FLOOR WATER BASED	Cabot's CFP Floor Water Based is a clear flooring polyurethane for all interior timber parquetry and cork flooring. It is a highly durable, hard wearing and fast drying finish	Solid timber, parquetry, cork, MDF interior flooring & floating floors
	 CFP FLOOR OIL BASED	Cabot's CFP Floor Oil Based is a clear flooring polyurethane for all timber, parquetry and cork flooring. It is highly durable and has a hard wearing finish	Solid timber, parquetry, cork & MDF interior flooring
	 FLOOR POLISH	Cabot's Floor Polish is a maintenance solution for rejuvenating timber floors. It prolongs the life of timber floor coatings	Previously coated timber, parquetry or cork floors
	 FLOOR CLEAN	Cabot's Floor Clean is an all purpose interior timber cleaner that is fast acting on grease and grime	All floor finishes including timber floors, tiles & painted walls
INTERIOR CLEARS	 CABOTHANE CLEAR WATER BASED	Cabot's Cabothane Clear Water Based is a clear polyurethane for doors, windows, trim and furniture. It is a highly durable, hard wearing and fast drying varnish	All interior timber excluding flooring
	 CABOTHANE CLEAR OIL BASED	Cabot's Cabothane Clear Oil Based is a clear polyurethane for doors, windows, trim and furniture. It is a highly durable, hard wearing varnish	All interior timber excluding flooring
	 BENCHTOP CLEAR	Cabot's Benchtop Clear Water Based is a highly durable, heat* and stain resistant, fast drying varnish that is safe for use on living and kitchen timber bench tops when the surface is fully cured.	Timber/bamboo kitchen bench tops, tables and coffee tables
	 DANISH OIL	Cabot's Danish Oil based is a penetrating oil for all interior furniture, doors, windows and trim. It penetrates to provide a protective natural matt finish	Panelling, furniture, doors & trim
INTERIOR STAINS	 STAIN & VARNISH WATER BASED	Cabot's Stain & Varnish Water Based is a combined stain and varnish for all interior timber. It is easy to use and has a durable finish that protects the natural timber grain	All interior timber
	 STAIN & VARNISH OIL BASED	Cabot's Stain & Varnish Oil Based is a penetrating stain for interior doors, windows, trim and furniture. It rejuvenates and transforms interior timber	All interior timber
	 INTERIOR STAIN WATER BASED	Cabot's Interior Stain Water Based is a penetrating stain for interior doors, windows, trim and furniture. It is easy to use and transforms the colour of interior timber	Interior doors, windows, trim and furniture
	 INTERIOR STAIN OIL BASED	Cabot's Interior Stain Oil Based is a penetrating stain for interior doors, windows, trim and furniture. It rejuvenates and transforms interior timber	Interior doors, windows, trim and furniture
PREPARATION & MAINTENANCE	 WOOD TONE PUTTY	Cabot's Wood Tone Putty is an interior putty for use on all interior timber. It fills holes, cracks and blemishes without shrinking	All interior timber
	 TOUCH UP PENS	Cabot's Touch Up Pens provides the perfect solution to quickly and easily disguise chips and scratches on all interior timber around your home. Available in 5 colours and a Satin & Gloss clear pen.	All interior timber

PREPARATION PRODUCTS	FINISH/ APPEARANCE	APPLY WITH	APPROX. COVERAGE RATE	NUMBER OF COATS	RE-COAT TIME	CLEAN UP WITH	SIZES AVAILABLE
Cabot's Floor Clean. Fill defects & nail holes with Cabot's Wood Tone Putty	Clear natural finish. Available in Gloss or Satin	Brush, 6-10mm nap roller or pad applicator	Up to 16m ² per litre	2-3	3 hours	Water	1L, 4L, 10L
Cabot's Floor Clean. Fill defects & nail holes with Cabot's Wood Tone Putty	Clear natural finish. Available in Gloss or Satin	Brush, 6-10mm nap roller or pad applicator	Up to 16m ² per litre	2-3	12 hours	Mineral Turpentine	1L, 4L, 10L
-	Natural protective sheen	Floor mop	Up to 60m ² per litre	1 coat	-	Water	1L
-	-	Floor mop	Up to 60m ² per litre	1 coat	-	Water	1L
Cabot's Floor Clean. Fill defects & nail holes with Cabot's Wood Tone Putty	Clear natural finish. Available in Matt, Gloss or Satin	Brush or spray gun	Up to 16m ² per litre	3	2 hours	Water	250mL, 500mL, 1L, 4L
Fill defects & nail holes with Cabot's Wood Tone Putty	Available in Gloss, Satin or Matt	Brush or spray gun	Up to 16m ² per litre	3	6 hours	Mineral Turpentine	250mL, 500mL, 1L, 4L & 300g spray pack
Fill defects & nail holes with Cabot's Wood Tone Putty	Clear	Brush	Up to 16m ² per litre	3	2 hours	Water	1L
Fill defects & nail holes with Cabot's Wood Tone Putty	Matt-low sheen lustre	Brush, roller or rag	Up to 10m ² per litre	2	8 hours	Mineral Turpentine	500mL, 1L, 4L
Fill defects & nail holes with Cabot's Wood Tone Putty	Adds colour & sheen to timber in one step. Available in Gloss or Satin	Brush or roller	Up to 16m ² per litre	3	2 hours	Water	250mL, 1L
Fill defects & nail holes with Cabot's Wood Tone Putty	Adds colour & sheen to timber in one step. Available in Gloss or Satin	Brush or roller	Up to 16m ² per litre	3	8 hours	Mineral Turpentine	250mL, 1L
Fill defects & nail holes with Cabot's Wood Tone Putty	Apply desired top coat	Brush, roller or rag	Up to 12m ² per litre	1 (or more)	2 hours before applying a top coat	Water	250mL, 1L
Fill defects & nail holes with Cabot's Wood Tone Putty	Apply desired top coat	Brush, roller or rag	Up to 12m ² per litre	1 (or more)	8 hours before applying a top coat	Mineral Turpentine	250mL, 1L
-	-	Putty knife	-	As required	Approx 2 hours. Deep holes may require longer	Water	90g, 250g
	Available in 5 colours, Clear Gloss and Satin			As required		Mineral Turpentine	10ml

Cabot's Project Guide

													
CABOT'S INTERIOR FINISHES	CFP FLOOR WATER BASED	CFP FLOOR OIL BASED	CABOTHANE CLEAR OIL BASED	CABOTHANE CLEAR WATER BASED	BENCHTOP CLEAR	STAIN & VARNISH WATER BASED	STAIN & VARNISH OIL BASED	DANISH OIL	INTERIOR STAIN WATER BASED	INTERIOR STAIN OIL BASED	WOOD TONE PUTTY	FLOOR CLEAN AND FLOOR POLISH	PAGE NUMBER
Floors	✓	✓				✓*	✓*				✓	✓	7-9
Stairs	✓	✓				✓*	✓*				✓	✓	7-9
Wall	✓	✓	✓	✓		✓	✓	✓	✓	✓	✓		4-11
Panels	✓	✓	✓	✓		✓	✓	✓	✓	✓	✓		4-11
Tongue & Groove	✓	✓	✓	✓		✓	✓	✓	✓	✓	✓		4-11
Ceiling Panels	✓	✓	✓	✓		✓	✓	✓	✓	✓	✓		4-11
Handrails	✓	✓	✓	✓		✓	✓	✓	✓	✓	✓		4-11
Doors & Door frames			✓	✓		✓	✓	✓	✓	✓	✓		4-5
Bars & Benchtops			✓	✓	✓	✓	✓	✓	✓	✓	✓		4-11
Furniture			✓	✓		✓	✓	✓	✓	✓	✓		4-11
Kitchen Cupboards	✓	✓	✓	✓		✓	✓	✓	✓	✓	✓		4-11
Lino/Vinyl Flooring												✓	6
Page Number	7, 8	7, 9	4, 5	4, 5	4	10 - 13	10 - 13	4	10 - 13	10 - 13	6	6	

*Overcoat with CFP Floor

There's always so much to do around your home!

Why not pick up the Cabot's Exterior Project Guide. It's a great thought starter – you can probably tackle more around your home than you realise!

Alternatively you can visit our website for some great product advice and step by step project footage.

For more information please visit www.cabots.com.au or contact our Customer Service team on 1800 011 006 or email woodcareassist@duluxgroup.com.au



www.cabots.com.au



Acknowledgements

Freedom Furniture www.freedom.com.au (Furniture)
 Globewest www.globewest.com.au (Furniture)
 Cadrys www.cadrys.com.au (Rugs)

Colours shown in this guide are as close as possible to actual colours. Please note: Due to limitations of the printing process, photographic and printed images may not represent the true colour. Printed on FSC® Certified Paper.

*Cabot's and Aquadeck are registered trademarks. TMThe Squares Device is a trademark.
 Cabot's Australia, 1956 Dandenong Road, Clayton, VIC, 3168.